

Hatchery Poult Selection Guidelines

Poult selection should be done throughout the hatch process:

- Hatch pull
- Sexing
- Servicing
- Loading

Animal Welfare Core Values:

Animal Welfare must always be a top priority whenever handling poults. All poults, regardless of quality status, must be handled in a manner that minimizes the potential for injury and unnecessary disturbance.

Environmental temperature conditions should also be managed to keep poults comfortable and to minimize discomfort.

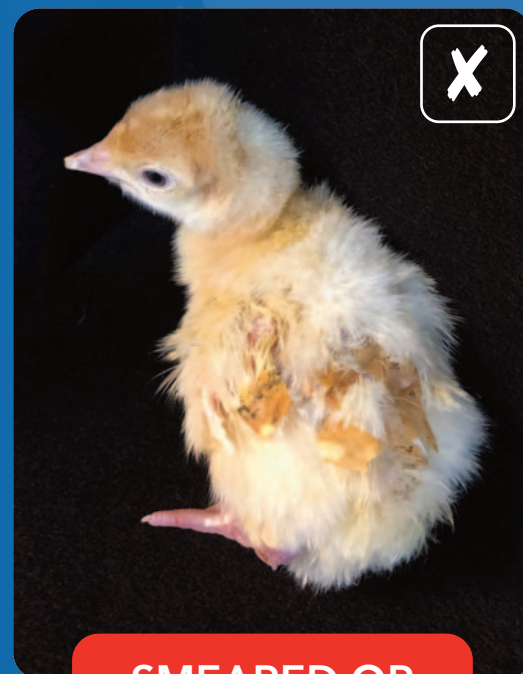


Nicholas®

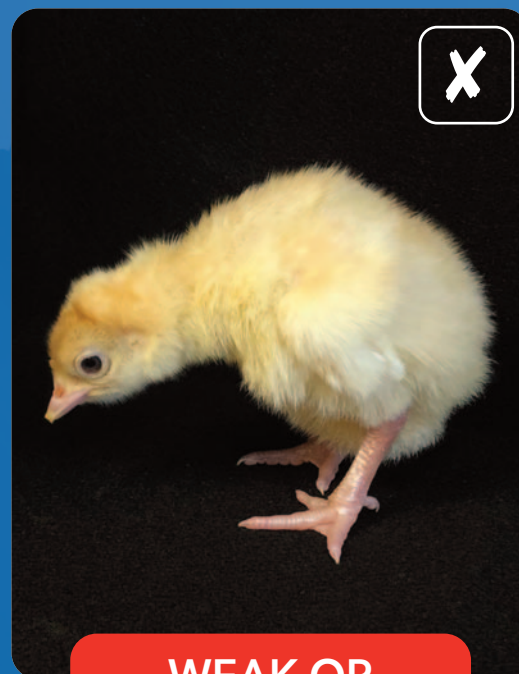
General Condition



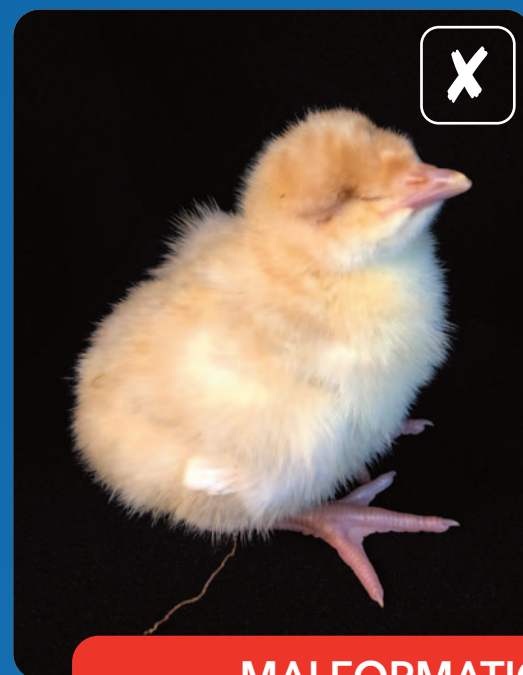
CLEAN, ALERT AND ACTIVE



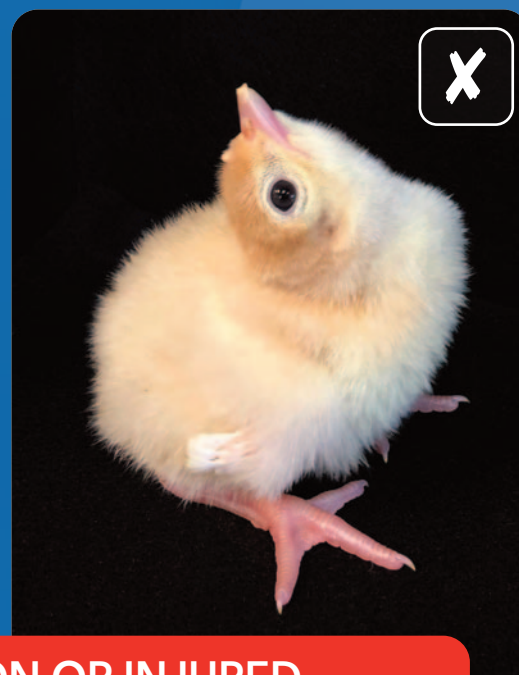
SMEARED OR DIRTY DOWN



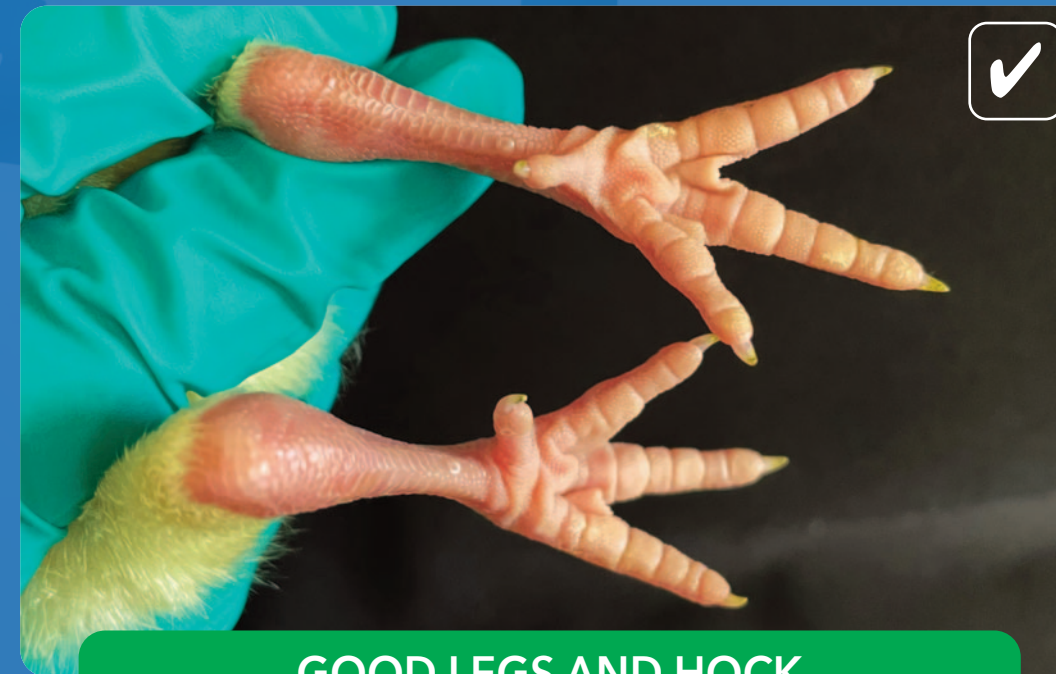
WEAK OR LETHARGIC



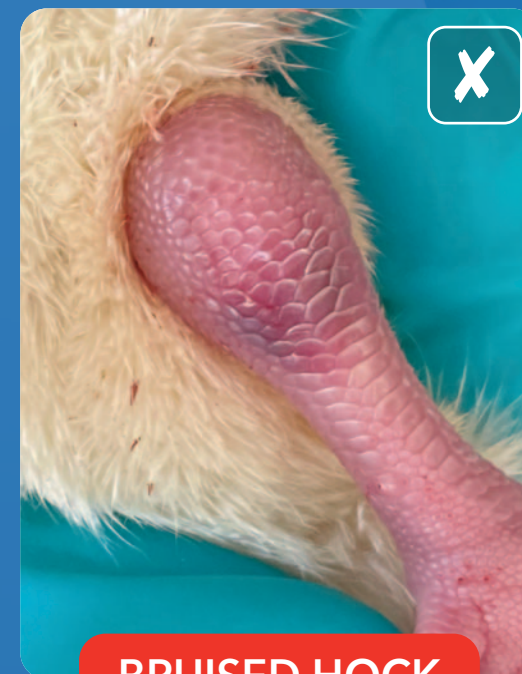
MALFORMATION OR INJURED



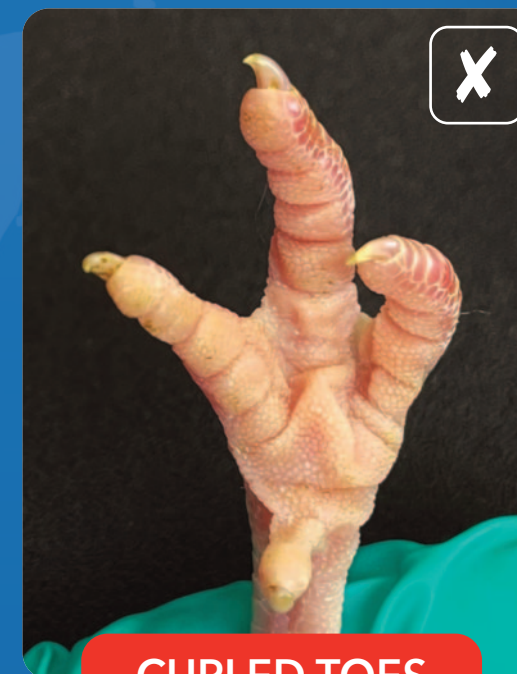
Legs and Feet



GOOD LEGS AND HOCK



BRUISED HOCK

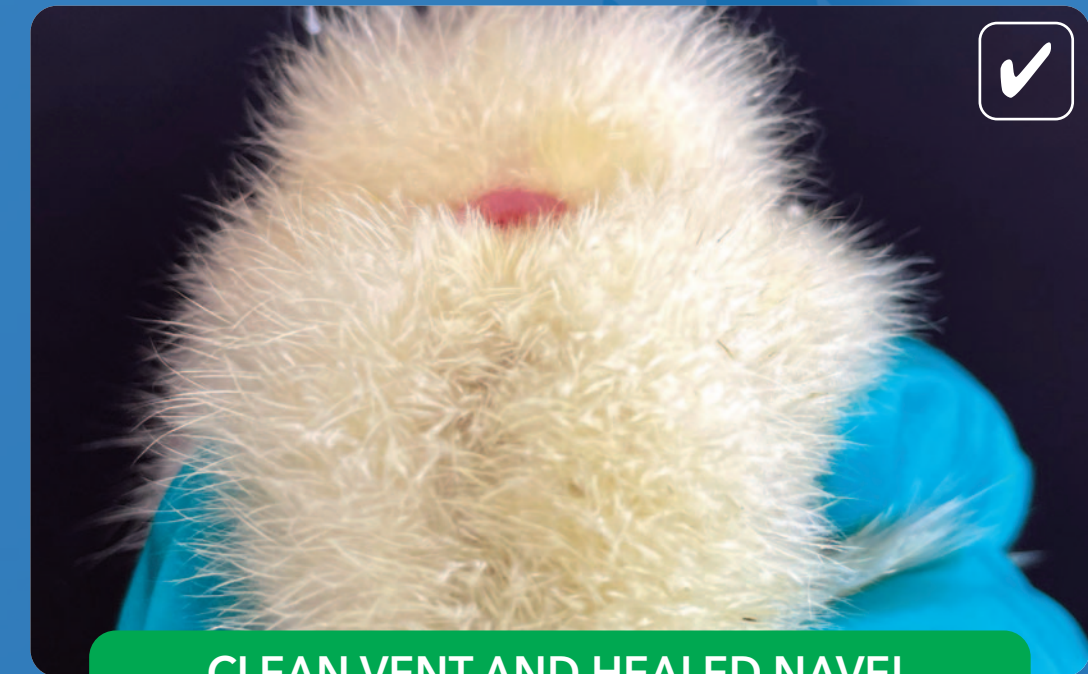


CURLED TOES



SPRADDLE LEGS

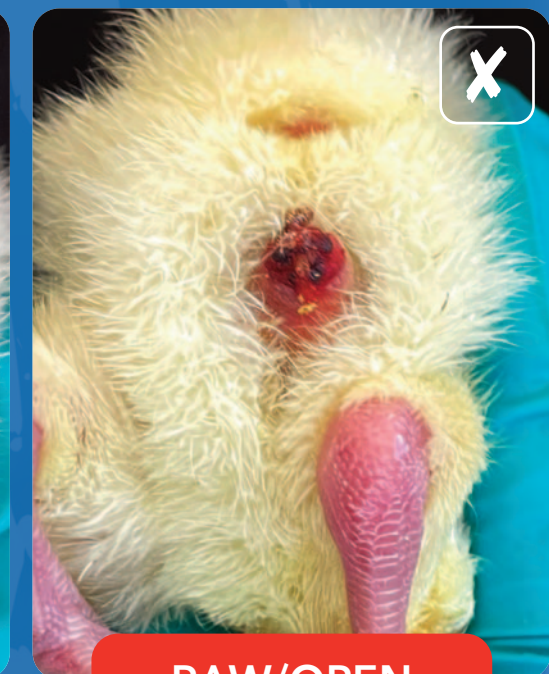
Navels and Vents



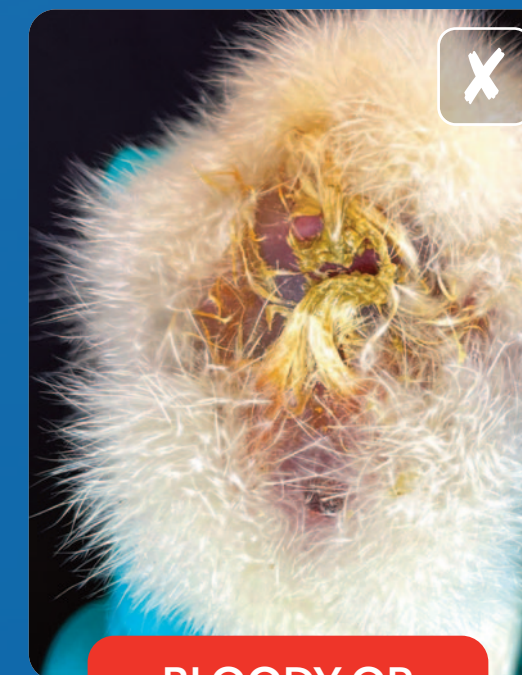
CLEAN VENT AND HEALED NAVEL



STRING THICKER THAN A HAIR



RAW/OPEN NAVEL



BLOODY OR PASTY VENT



NAVEL SCAB EQUAL OR >5MM (0.25 IN)